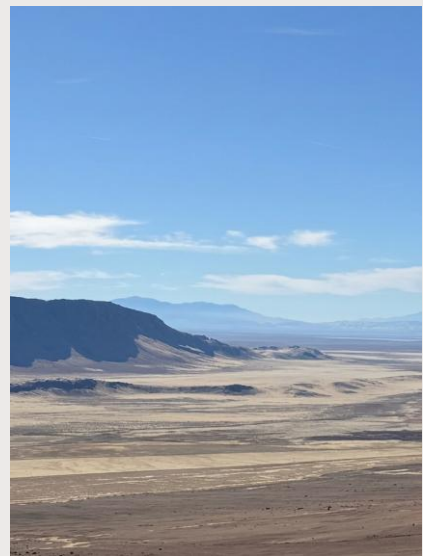




# BLACK MAMMOTH METALS CORPORATION

CREATING VALUE THROUGH DISCIPLINED ACQUISITION AND EXPLORATION IN THE  
WESTERN UNITED STATES

APRIL 2026



## Cautionary Note

This presentation contains forward-looking statements. All statements, other than statements of historical fact, that address activities, events or developments that Black Mammoth (“Company”) believes, expects or anticipates will or may occur in the future (including, without limitation, statements regarding exploration results, potential mineralization, future plans and objectives of the Company and mineral resources) are forward-looking statements. These forward-looking statements reflect the current expectations or beliefs of the Company based on information currently available to the Company. Forward-looking statements are subject to a number of risks and uncertainties that may cause the actual results of the Company to differ materially from those discussed in the forward-looking statements, and even if such actual results are realized or substantially realized, there can be no assurance that they will have the expected consequences to, or effects on the Company. Factors that could cause actual results or events to differ materially from current expectations include, among other things, uncertainties relating to the availability and costs of financing needed in the future, changes in commodity prices, changes in equity markets, changes to regulations affecting the Company's activities, the uncertainties involved in interpreting exploration results and other geological data and the other risks involved in the mineral exploration industry. Any forward-looking statement speaks only as of the date on which it is made and, except as may be required by applicable securities laws, the Company disclaims any intent or obligation to update any forward-looking statement, whether as a result of new information, future events or results or otherwise. Although the Company believes that the assumptions inherent in the forward-looking statements are reasonable, forward-looking statements are not guarantees of future performance and accordingly undue reliance should not be put on such statements due to the inherent uncertainty therein.

The content of this presentation has been reviewed by Mr. Mark J. Abrams, CPG, VP Exploration & Director of Black Mammoth Metals Corp. Mr. Abrams is a Non-Independent, Qualified Person as defined under the terms of National Instrument 43-101 (“NI 43-101”).**The information provided in this presentation has not all been independently verified by management.**

## Western US, with Nevada Focus

Other States: Arizona, Idaho, Utah, California, New Mexico and Oregon.

Properties: 100% interest in 25 exploration properties with an additional 20 non-core properties.

Claims: Over 2700 BLM and USFS unpatented claims, 6 patented claims, one state lease.

Area: [Claims position covers approximately 20,257 hectares \(55,000 acres\).](#)

Targeted Metals: Gold, silver, copper, lead, rare earths.

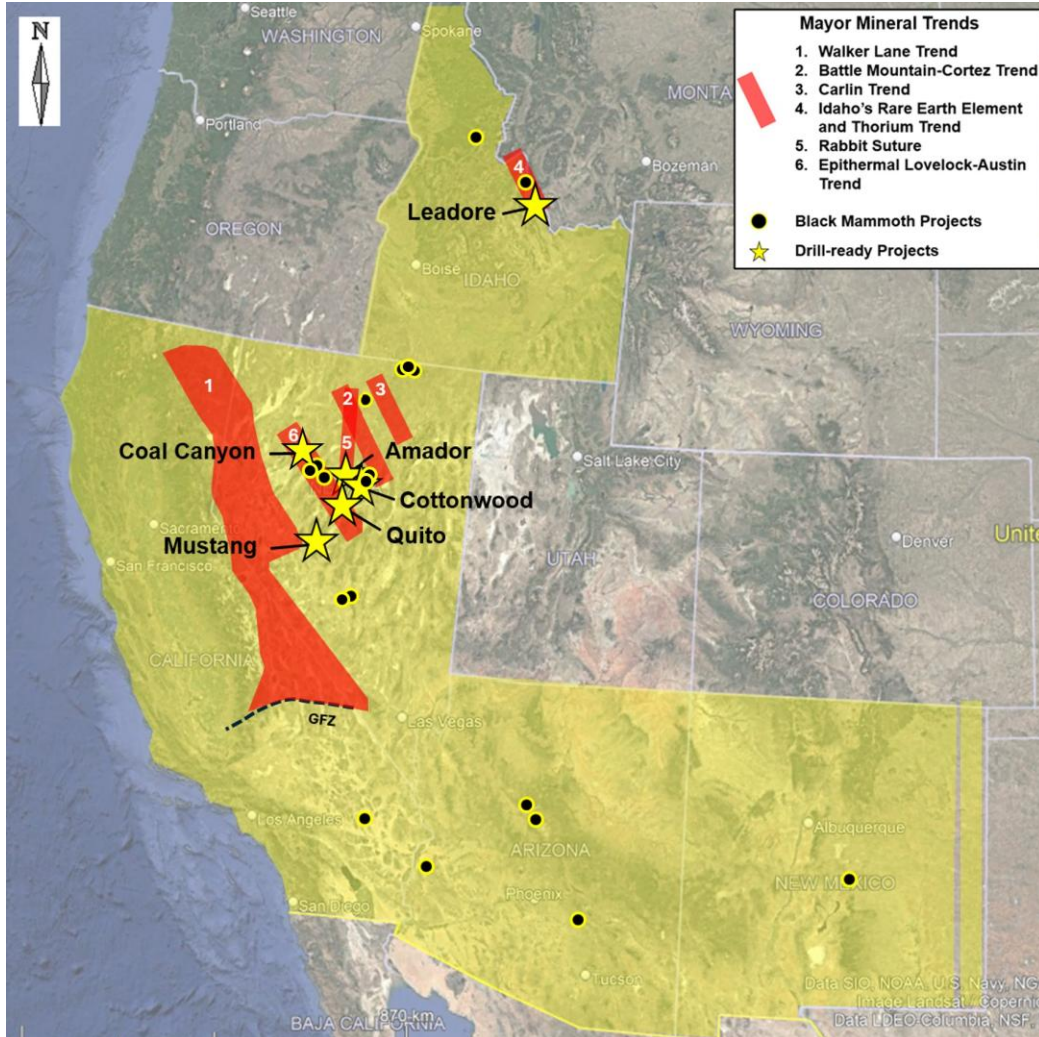
# PORTFOLIO – 25 CORE PROPERTIES



*The Core Properties are listed for reference only and do not imply relative priority or development status.*

<b>Property</b>	<b>County</b>	<b>State</b>
<i>Island Mountain District</i>	<i>Elko</i>	<i>NV</i>
Coleman Canyon Gold		
St. Elmo Gold		
Diamond Jim - Ag, Pb, Zn, Sb		
<i>Callaghan District</i>	<i>Lander</i>	<i>NV</i>
Cottonwood Gold		
Charlie Gold		
North Callaghan Gold		
<i>South Ravenswood District</i>	<i>Lander</i>	<i>NV</i>
Raven Gold		
Happy Cat Gold		
Tom's Pediment		
Quito Gold	Lander	NV
America Mine Gold	San Bernardino	CA
Leadore – Ag, Pb, Rare Earths	Lemhi	ID
Amador Silver	Lander	NV
Mustang Gold-Silver	Nye	NV
Coal Canyon Gold	Pershing	NV
East Reveille Gold	Nye	NV
West Reveille Silver	Nye	NV
Gallinas Rare Earths	Lincoln	NM
Clover High-Grade Gold	Elko	NV
Blanco Creek Gold-Silver	Idaho	ID
Big Bear Copper	Gila	AZ
Ramsey Silver	La Paz	AZ
Zulu Gold	Gila	AZ
Northern Star Copper	La Paz	AZ
Cupz Gold	Esmeralda	NV

# INTENDED DRILLING – PHASE ONE



## Drill Permit - Status

- Leadore, ID: Permitted.
- Cottonwood, NV: Permitted, amendment required.
- Amador, NV: Permitted.
- Mustang, NV: Initiating BLM Notice process.
- Quito, NV: Permit application advancing; timing subject to regulatory review.
- Coal Canyon NV: Previous operator's permit under review for potential transfer to BMM.

# LEADORE AG, PB, REE - IDAHO



**Location:** Junction Mining District, Lemhi County, ID.

**Land Position:** 142 unpatented lode claims covering approximately 1178 hectares (2913 acres) administered by the Bureau of Land Management (BLM) and US Forest Service (USFS).

**History:** Historical mining of silver-lead mineralization along sheared lithological contact zones began in the early 1900s.

**Mineralization:** Sheared, intrusive-related silver-lead and minor gold mineralization, approximately 4.5 square kms in size, and recently discovered oxidized rare earth elements (REE) placer layers (doesn't continue at depth).

**Historic Drilling (2012):** Six core holes with maximum depth of 105m encountered silver-lead mineralization near the three historic mines and found a new disseminated mineralized zone in brecciated granite. Mineralization remains open along the range-front and at depth.



## Recent Work & Results:

- Recent BMM rock samples returned values of **up to 2160 g/t (69.7 oz/t) silver and over 20% lead** and gold grades ranging from hundreds of ppb to 1 g/t.
- **Discovery of high-grade placer rare earth elements (REE)** during BMM sampling in 2025.
- Recent induced polarization (IP) survey revealed a **strong chargeability** with low-resistivity anomaly beneath historical mines with maximum E-W width estimated at 400m with overlying silver-lead oxide layer and REE placer layer.
- Permit: 12 drill sites to drill-test priority targets.

## Opportunity:

- Open high-grade silver-lead mineralization never followed up.
- Recognition and exploration of multiple untested mineralized shear zones.
- IP revealed large untested chargeability anomaly beneath historical mines.
- Potential for silver-lead-REE discovery.

# LEADORE, ID - OUR PATH FORWARD

- Begin drill testing of the **oxide** silver-lead zone (see Figure 1).
- Drill test the IP-defined **sulfide** target (see Figure 2).
- Evaluate the lateral extent and continuity of the **REE** placer layer.

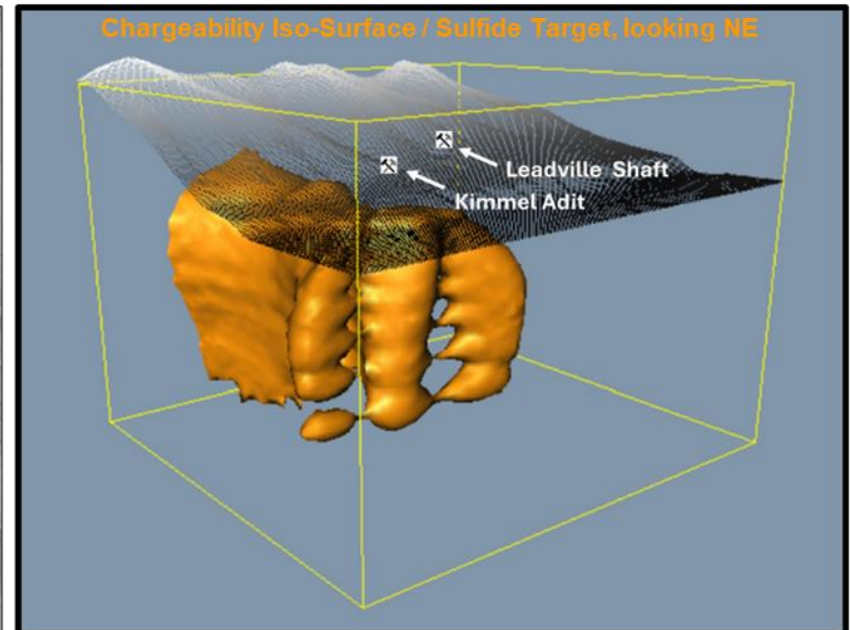
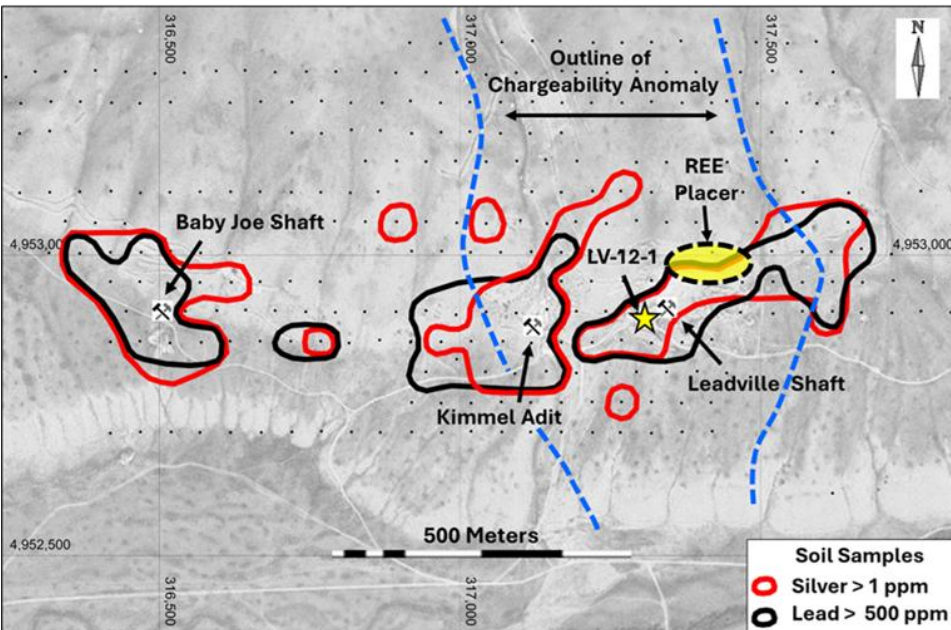


Figure 1 – Oxide Mineralization – 4.5 Square Km Silver-Lead Zone.

Figure 2 – Chargeability Iso-Surface/Sulfide Target, looking NE, Located Underlying the Historic Kimmel Mine.

# COTTONWOOD, NV

**Location:** Cottonwood is located within an erosional window (the Callaghan Window) that exposes highly prospective Lower Plate Paleozoic sedimentary rocks 35 kilometers NE of Austin in Lander County, NV.

**Land Position:** 214 unpatented lode claims, managed by the BLM, covering approximately 1785 hectares (4,411 acres).

**Recent Work:** BMM carried out an IP survey, which included nine IP lines - approximately 23.8 line-kms. A magnetic survey has been inversion modelled.

**Objective:** Assessing the intense sulfide gold mineralization encountered in drill holes CW-1, CW-2, and CW-2B from the Company's 2025 spring drilling campaign.

**Results:** Three drill targets identified (see *Figure 1*). **Best Au intercepted in CW-2B: 61 m @ 0.416 g/t at 190.5 m, including 3.04 m @ 3.57 g/t.**



# COTTONWOOD - GEOPHYSICAL AND STRUCTURAL TARGETS

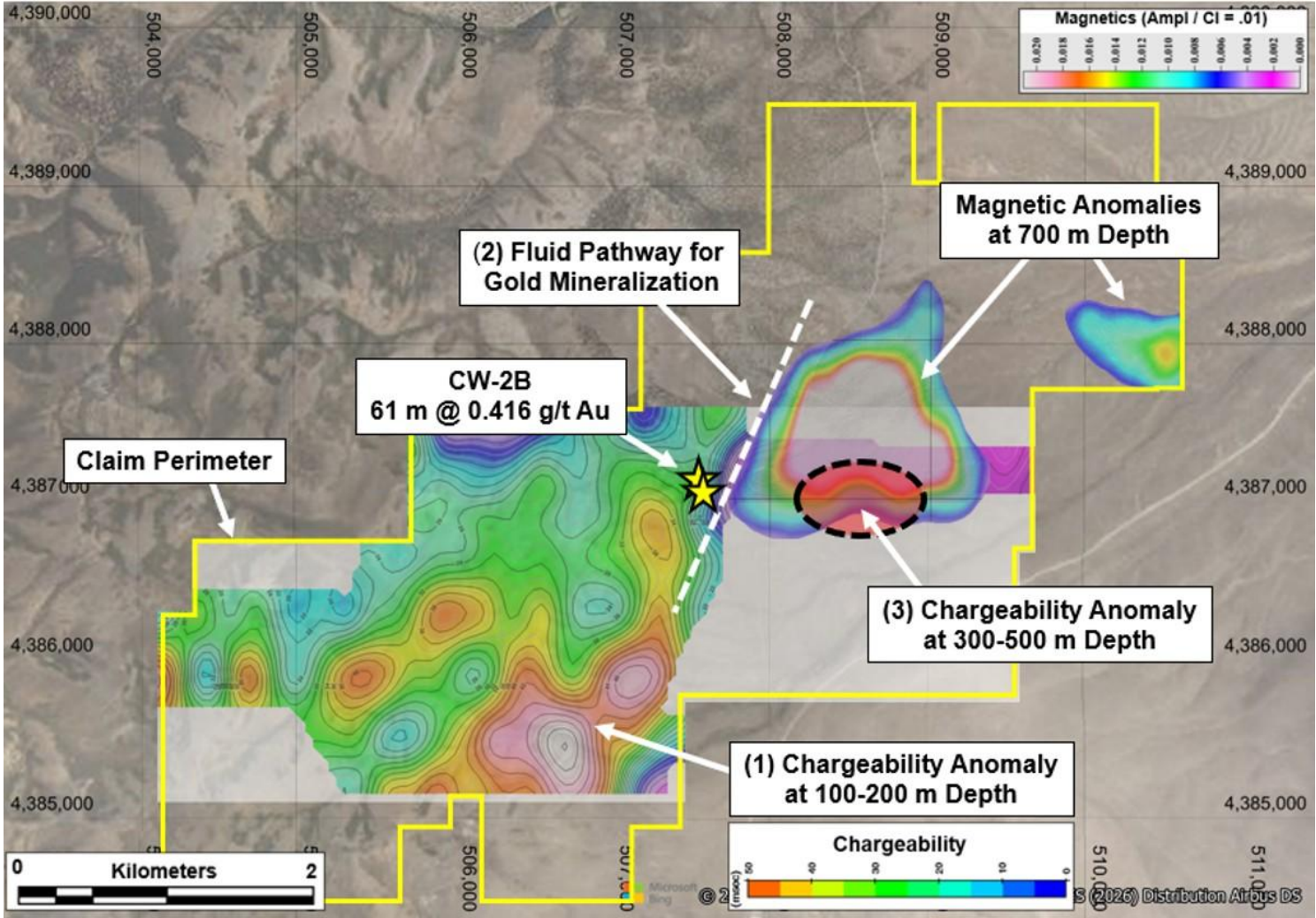


Figure 3 – Drill Targets at Cottonwood.

## IP Survey Results – Drill Targets:

- 1) A high chargeability anomaly located in the west-southwest portion of the Property, **potentially related to high sulfide content**, with an E-W maximum width of approximately 750m, at 100-200m depth.
- 2) A **potentially higher-grade, gold-mineralized structural corridor** between the magnetic anomaly to the east of the Company's recent CW drill holes and the chargeability anomalies to the west.
- 3) A **chargeability anomaly** at the contact zone with Paleozoic basement rocks at the southern end of the interpreted intrusion also with a E-W maximum width of approximately 750m at 300-500m depth.

## Opportunity:

- Previously identified gold mineralization in Upper and Lower Plate rocks (**61 m @ 0.416 g/t Au**) with potential for a larger, high-grade Carlin-type gold system.
- Previously and recently conducted geophysical surveys indicate potential for multiple targets on the large claims position.
- BMM's drill hole CW-2B confirmed existence of a high-grade structure up to **3.04 m with 3.57 g/t Au**, which has never been further investigated in the direction of dip and along strike.

# AMADOR SILVER, NV



**Location:** Lander County, Nevada, situated on the western side of the Toiyabe Range, approximately 7 km north of the historic silver mining town of Austin.

**Land Position:** 78 unpatented lode claims, administered by the BLM and USFS, covering approximately 631 hectares (1559 acres).

**Mineralization:** High-grade silver hosted in a quartz vein shear extending 1.22 km along the range-front which is the contact zone of Devonian sediments (Slaven Chert) with plutonic intrusive.

**Historic Drilling:** Previous operators have reported 3-to-12m drill intervals of significant silver mineralization which have not been followed up to date.

**Recent Work:** BMM re-examined the shear zone of the mineralized quartz vein along with the tailings piles. The 19 rock samples assayed 210.3 g/t Ag (6.76 oz/t) ranging from 1.7 g/t to 717 g/t Ag (23.04 oz/t). These were accompanied by strong trace element anomalies (As, Sb & Se).

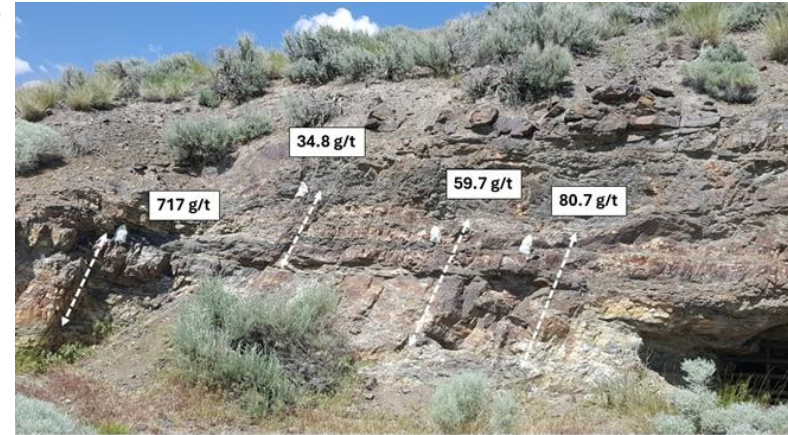


Figure 4 – Quartz Vein Shear with High-Grade Silver Samples.

**Geophysical Work:** BMM conducted a geophysical survey on the Property which comprised eleven IP lines with a total length of approximately 19 line-kms.

**Drill Test:** Permitted for five drill sites to test a chargeability anomaly which encompasses the high-grade silver shear zone along the range-front and its potential deeper extension to the west (see Figure 5).

**Opportunity:** Potential for near-surface oxide and sulfide silver mineralization.

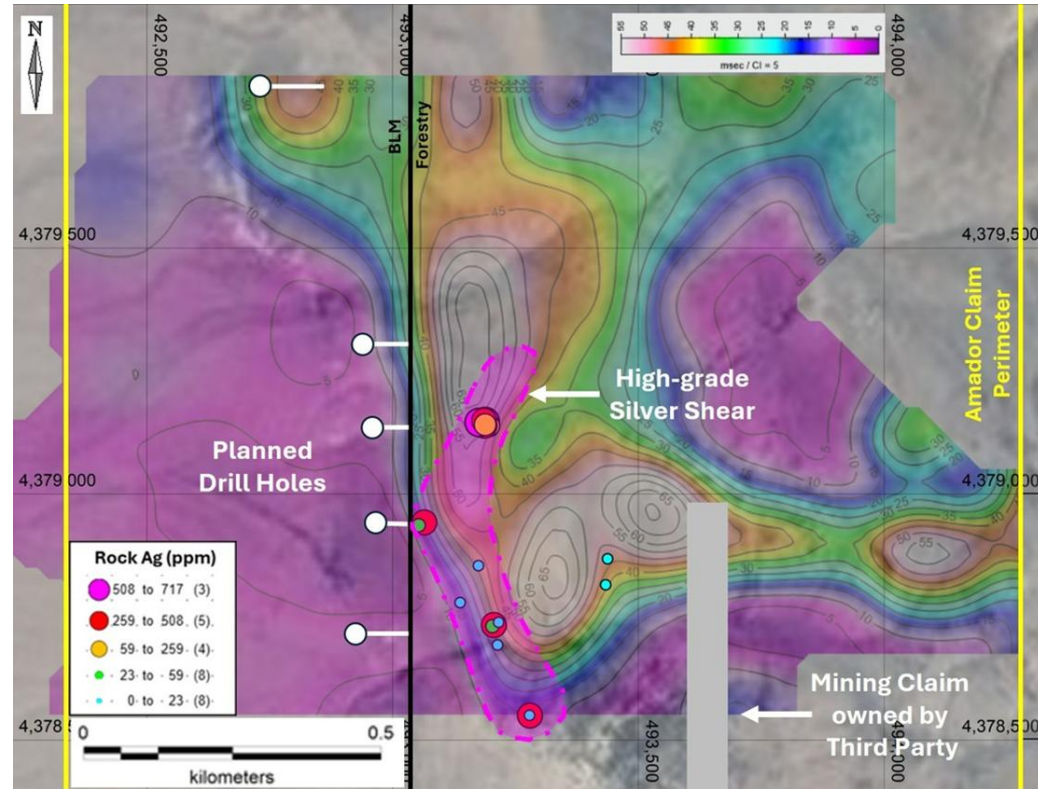


Figure 5 - 0 to 50m IP Depth Slice with Planned Drill Hole Locations.

# MUSTANG GOLD-SILVER, NV



**Location:** Mustang extends over 8.4 km north-south along the Pactolus Hills on the Walker Lane Trend, Nye County.

**Land Position:** 138 unpatented lode claims administered by the BLM covering 1124 hectares (2778 acres).

**Historic Drilling:** The Company has acquired extensive data on the property, including historical RC drill results such as **M11-06: 12.2 m @ 1.71 g/t Au (incl. 7.6 m @ 2.5 g/t Au)** – *Queensgate Resources, 2011.*

**Recent Work:** BMM completed an IP and a ground gravity survey and developed interpreted inversion models.

**Results:** Geophysical surveys conducted by BMM show overlapping patterns of chargeability and resistivity, potentially related to alteration and mineralization. The recently completed ground gravity survey indicates a structural uplift (horst) of the underlying basement rock.

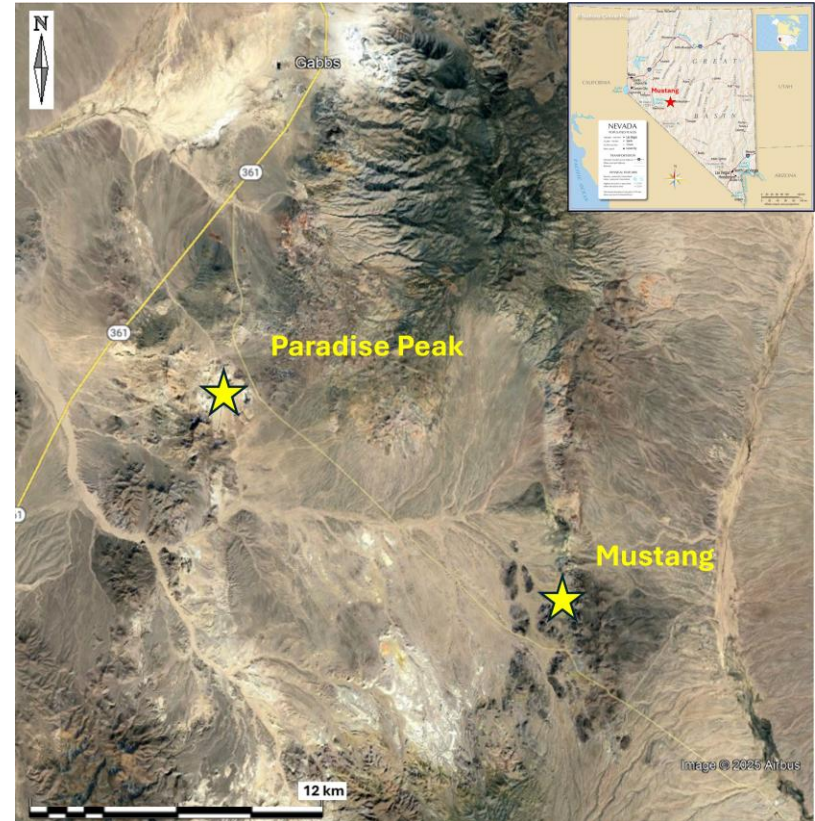


Figure 6- The Paradise Peak Gold-Silver Deposit is 13 kms To the NW of Mustang.

## Overlapping IP Anomalies with Au & Ag at Surface and in Drill Holes – Southern Zone.

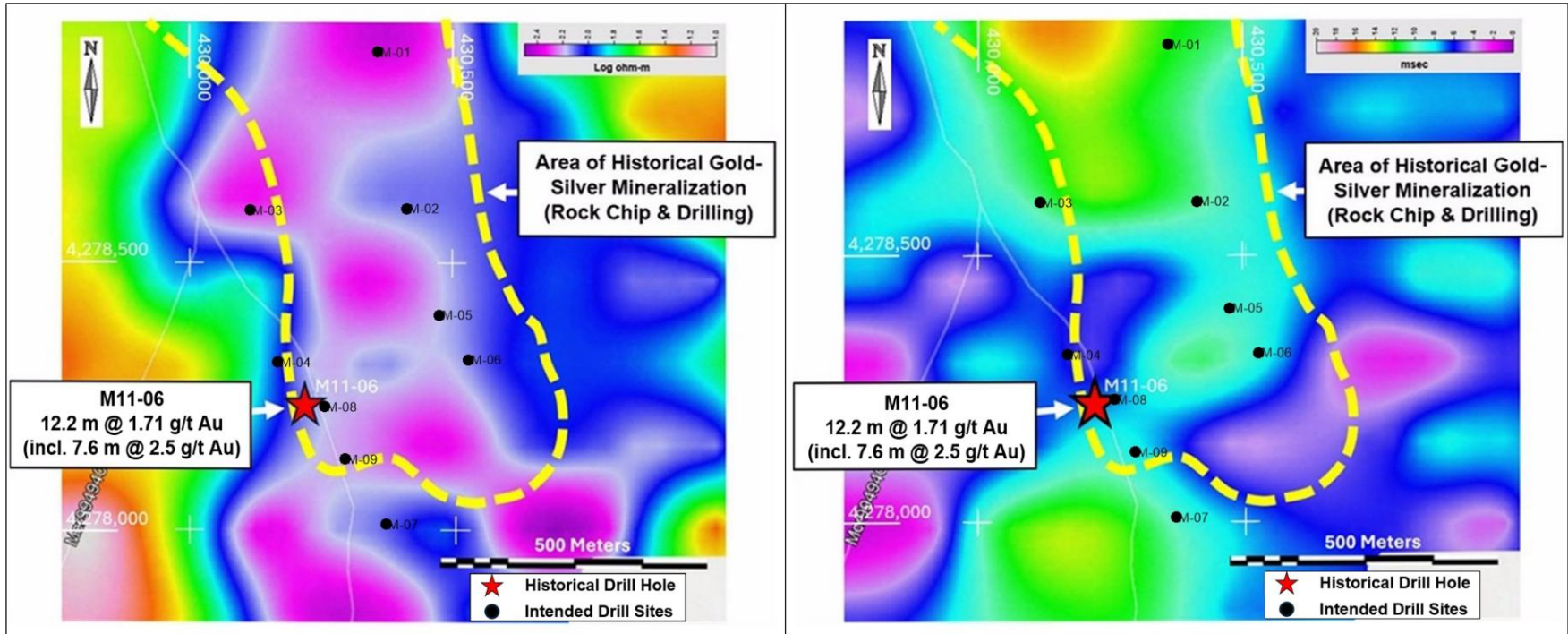


Figure 7 - Resistivity (left image) and Chargeability (right image) Depth Slices at a Depth of 150-250m and Area of Historical Gold-Silver Mineralization with Intended Drill Site Locations.

## Overlapping Geophysical Anomalies with Known Au & Ag Mineralization

### Opportunity:

- Historically explored gold-silver system on the property.
- The Gravity Survey has outlined a prominent NS trending gravity high (horst structure) coincident with the overlapping and coherent chargeability and resistivity anomalies that may represent favorable structural preparation for hydrothermal fluids and subsequent gold and silver mineralization and is an analog to the nearby Paradise Peak deposit.
- BLM Notice-level drill permit process has been initiated.

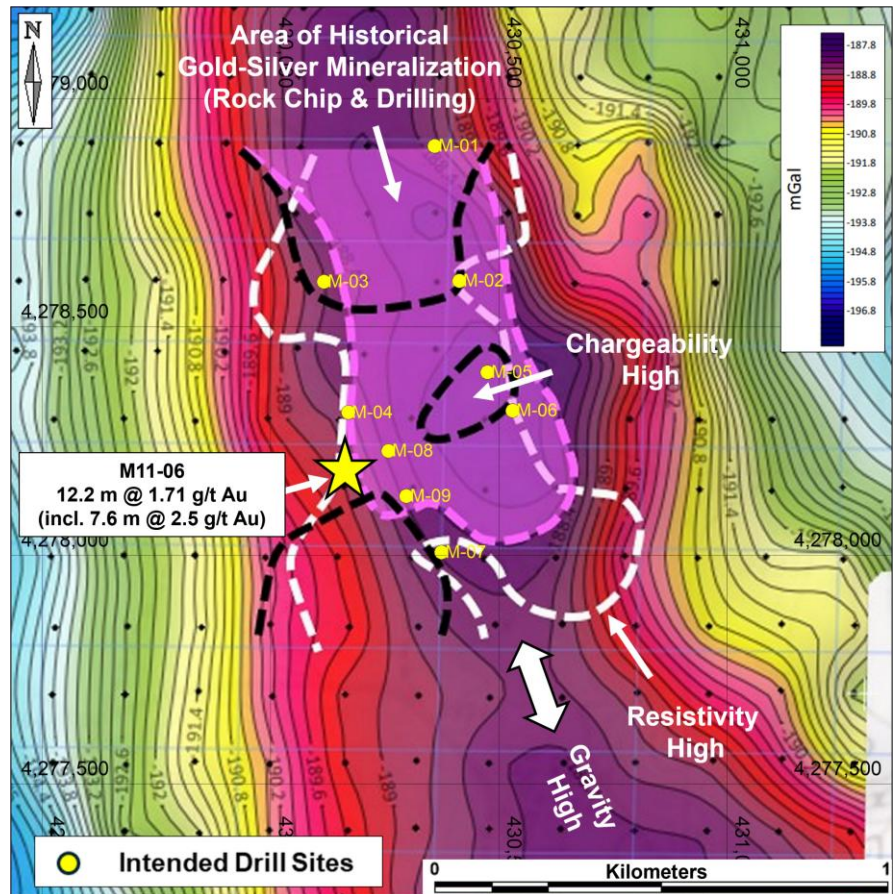


Figure 9 - . Gravity Anomaly Coincident with Projected Chargeability and Resistivity Outlines at Depth of 150-250m and Area of Historical Gold-Silver Mineralization with Intended Drill Site Locations.

## **Carlin-Style Geology & High-Grade Drill Targets:**

**Location:** Toiyabe Range, Lander County, 16 kms south of Austin.

**Land Position:** 203 unpatented lode claims covering approximately 1642 hectares (4059 acres) administered by the USFS.

**Mineralization:** Mined by open pit (1986-88) and processed by floatation and CIL with documented historical gold mineralization and production completed prior to the implementation of NI 43-101. Nearly all rock formations have ore grade mineralization: Valmy, Wenban, Roberts Mountains, Lower Antelope Valley, Ninemile.

**Historic Drilling:** Previous operators have drilled over 900 holes, mostly Upper Plate. FMC Gold, White Knight, Meridian Gold, Yamana, Coeur Mining.

## Carlin-Style Geology & High-Grade Drill Targets:

- The geological setting at **Quito** is typical to many of Nevada's prolific Carlin-style gold deposits. The mineralization is concentrated in Paleozoic-age carbonate sediments, with the highest grades being associated with fault intersections along the axis of a property-scale anticline (see *Figure 10*).

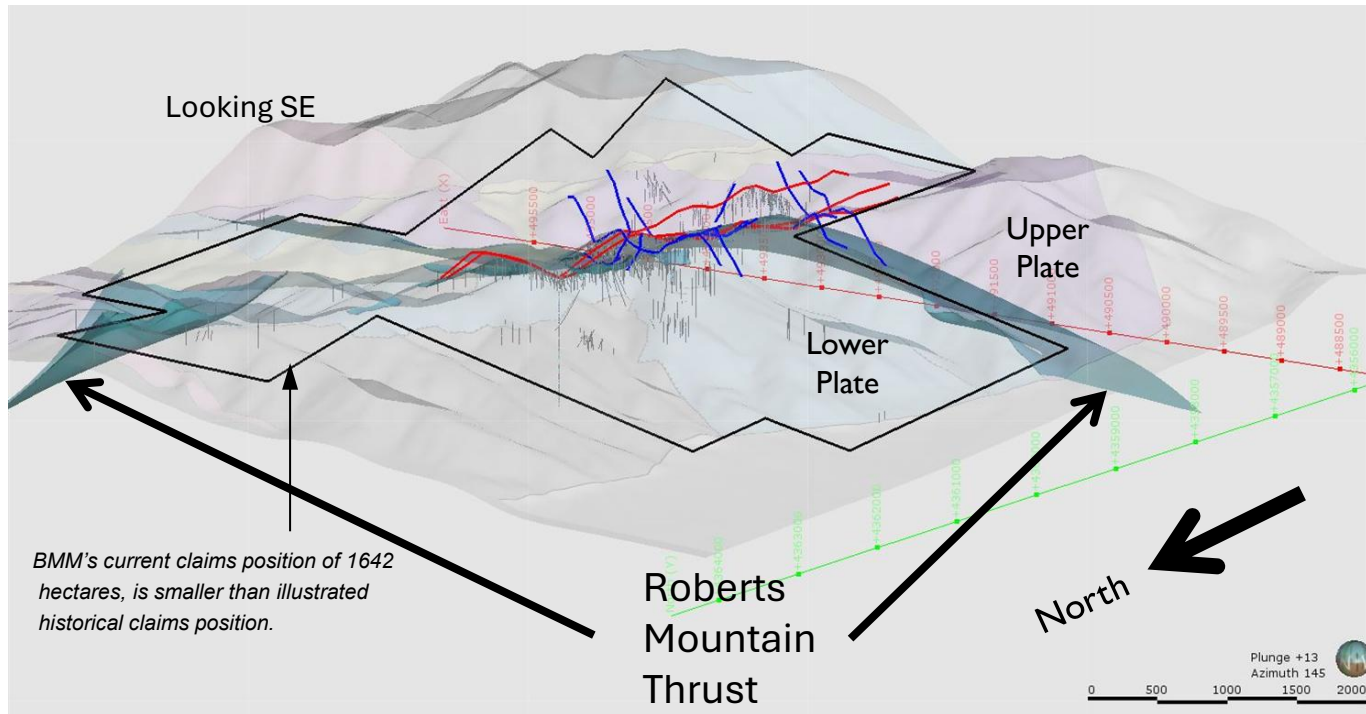


Figure 10 – Roberts Mountains Thrust Anticline.

# QUITO – HISTORICAL GOLD RESOURCE IN MAIN PIT

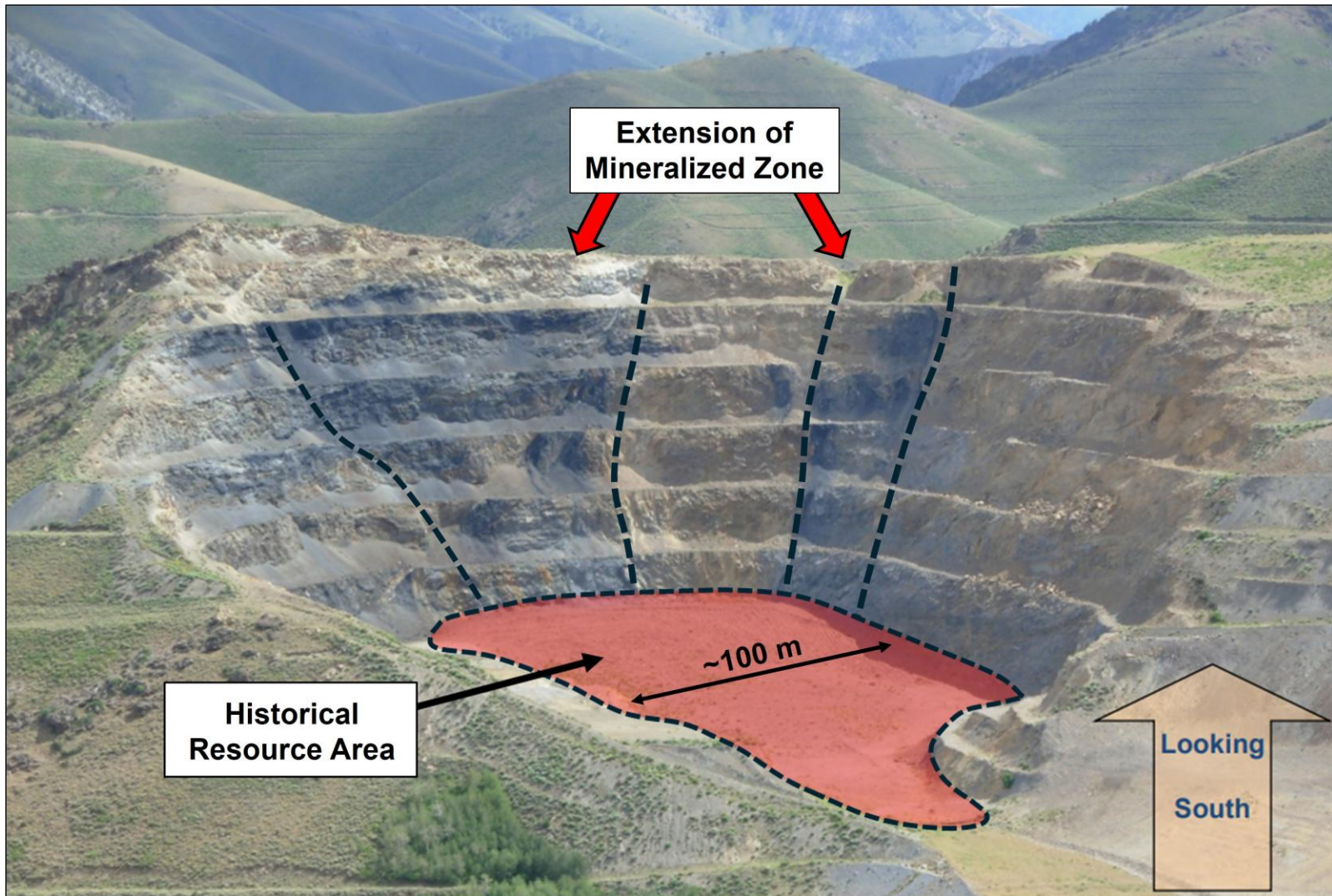


Figure 11 – Quito Main Pit, Looking South.

- Proceed with drill testing of the modelled high-grade structural zone, subject to permitting and technical review.
- BMM began an IP survey at the end of 2025 and intends to complete the survey in early 2026, weather permitting.

# COAL CANYON GOLD, NV

**Location:** West side of the Humboldt Range, approximately 14 km southwest of the Coeur Rochester Silver-Gold operation in Pershing County, NV.

**Land Position:** 43 federal lode claims covering approximately 359 hectares (888 acres) administered by the BLM.

**Mineralization:** Potential for multiple types ranging from epithermal and intrusion-related to sediment-hosted precious metal.

**Gold Mineralized Area at Surface:** Significant oxide gold mineralization in historic road cuts and drill holes.

**Recent Work & IP:** Rock chip samples collected by BMM confirmed historic gold occurrences with gold grades ranging from a few tenths of a g/t up to 2.28 g/t, accompanied by high trace element concentrations of up to 7,120 ppm arsenic, as well as 100.5 ppm antimony and 44.7 ppm selenium.



Figure 13 – Coal Canyon 14km SW of Coeur Rochester Silver-Gold Operation.

# COAL CANYON - GEOPHYSICAL TARGETS

BMM carried out a geophysical survey, which included four IP lines totaling approximately 6.3 line-kms.

## Results:

- The IP survey revealed a circular-like resistivity anomaly framed by chargeability anomalies, which coincide with gold anomalies from surface rock chip samples as well as with gold assay results from historical drill holes.

## Opportunity:

- Potential to expand oxide gold mineralization at the surface.
- The geophysical (IP) survey has revealed clear zonation patterns of chargeability and resistivity anomalies that coincide with surface gold anomalies, **defining an unexplored structural corridor** trending in a north-south direction.

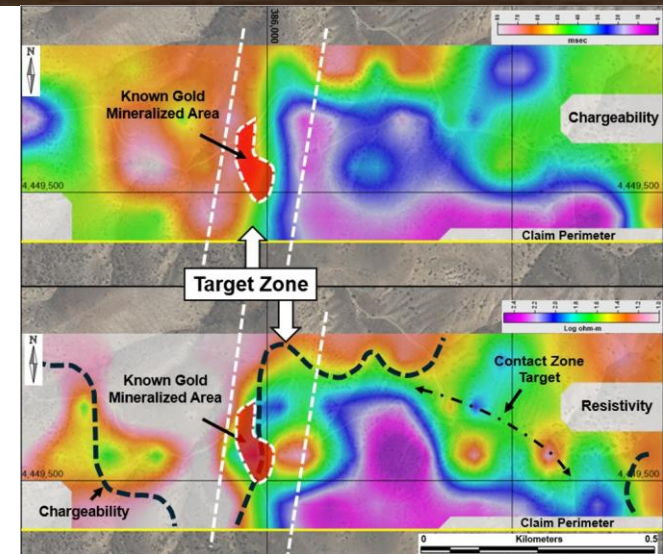


Figure 14 – IP depth slices (chargeability and resistivity, at a depth of 50–100 m) covering the known gold mineralized area.

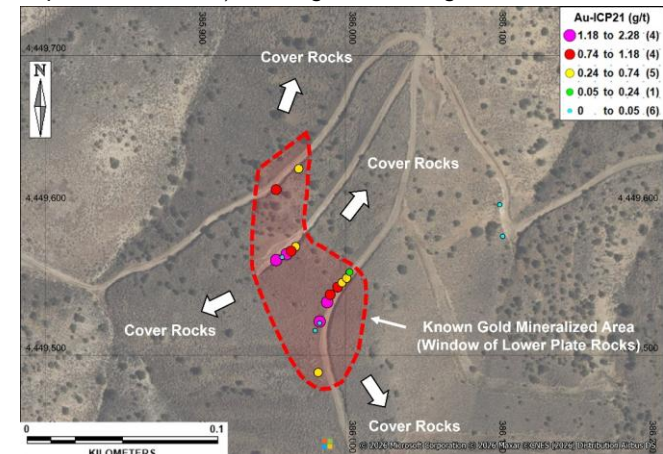


Figure 15 – Erosional window showing BMM's recent rock chip locations and gold assays.

## **Mustang & Quito: Drilling & Evaluation**

- **Drill Program intended at Mustang:** Finalize planning and execute a drill campaign to test the overlapping chargeability, resistivity and gravity anomalies and the surface gold-silver mineralization.
- **Quito Structural Investigation:** Complete the IP evaluation and rock sampling initiated in to refine drill targets along the high-grade Quito structural zone.

## **Leadore: Drill Test Oxide and Sulfide Targets**

- **Leadore Drill Testing:** Utilize the 12 approved drill sites to test priority silver-lead-REE targets and investigate the large chargeability anomaly identified beneath the historical mines.
- **Delineate REE Placer Layer:** Conduct systematic testing to determine the full extent and grade of the recently discovered oxide rare earth elements (REE) placer layer.

## **Amador & Cottonwood: Advanced Targeting**

- **Execute Amador Drill Test:** Move forward with the five permitted drill sites to test the delineated chargeability anomaly encompassing the high-grade silver shear zone.
- **Cottonwood Strike Extension:** Investigate the high-grade structures identified in the CW-2B drill hole along strike and down-dip to expand the known gold-mineralized corridor.

## **Coal Canyon: Structural Corridor Exploration**

- Focus on unexplored structural corridors identified through IP surveys that coincide with surface gold anomalies.

## **Strategic Acquisitions**

- Continue to create value by identifying high quality properties that can be quickly worked-up to drill-ready where the Company can acquire a 100% interest within the Western US.

# TEAM



**Dustin Henderson**, BBA, President & CEO – Director

**Mark J. Abrams**, CPG, CFO, VP Exploration – Director

**Thomas G. Klein**, Certified Mineralogist - Exploration Manager

**Adam Knight**, P. Eng. – Independent Director

**Harvey Lalach** – Independent Director

**Geoff Goodall**, B. Sc., P. Geo. – Technical Advisor

# SHARE STRUCTURE



## **Share Structure** *(as at March 5, 2026, un-audited)*

<b>Issued and Outstanding:</b> <i>(Insiders hold approximately 39%)</i>	45,834,371
<b>Warrants:</b>	340,500
<b>Options:</b>	2,521,000
<b>Fully Diluted:</b>	48,695,871

**Dustin Henderson, BBA, President & CEO**

Tel: +1 (604) 347-9101

Email: [blackmammothmetals@gmail.com](mailto:blackmammothmetals@gmail.com)

Website: [blackmammothmetals.com](http://blackmammothmetals.com)